

IMPORTANT SAFETY AND INSTALLATION INSTRUCTIONS

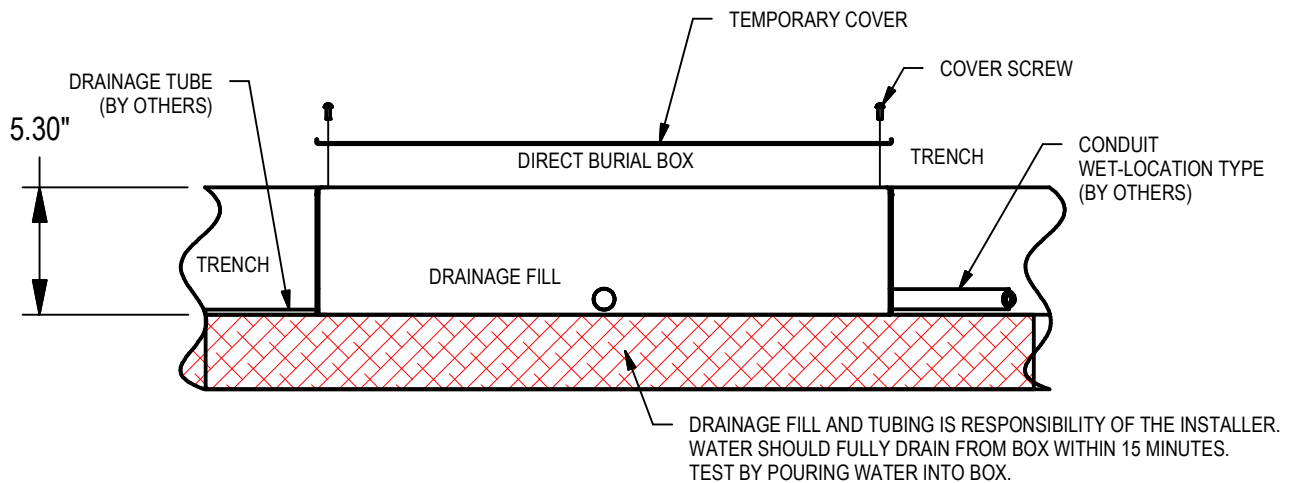
WARNING: Risk of fire and electrical shock. This product is to be installed by a qualified electrician only.

CAUTION: When using electrical equipment, basic safety precautions should always be followed including the following: Read all instructions carefully before installation and save

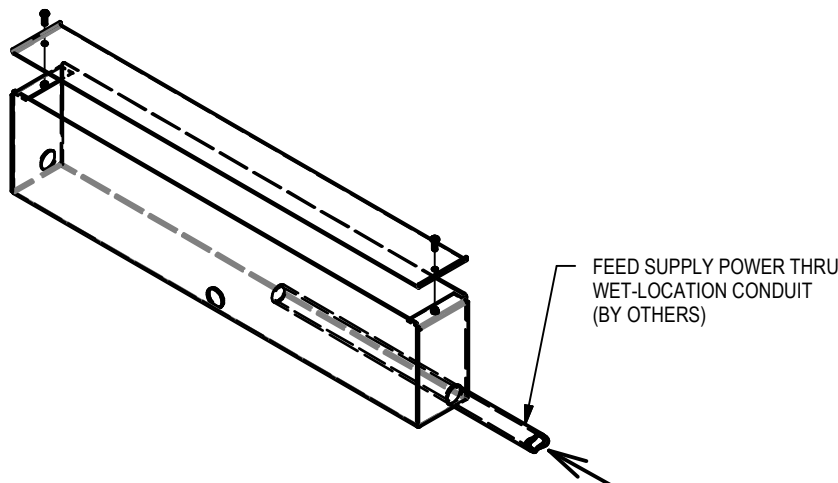
for future use. Make sure installation and all connections are in accordance with National Electrical Code and any local regulations. To avoid possible electrical shock, be sure that power supply is turned off before installing or servicing this fixture. Servicing should be performed by qualified service personnel.

These instructions do not claim to cover all details or variations. When additional information is desired, please contact your SPI representative.

DBB/RMB - BOX WITH INTEGRAL SEALED SPLICE ENCLOSURE



1. Excavate trench, add drainage fill and drainage tubing to the appropriate depth. *(Top of the burial-box is to be flush with the finished grade.)
2. Place the burial-box at the desired location for the fixture.
3. Remove temporary cover from burial-box.
4. Bring supply power to the burial-box via wet-location conduit (provided by others) through a knockout on the end.



10/21/2016
IS87590X
Sheet #1 of 6

IMPORTANT SAFETY AND INSTALLATION INSTRUCTIONS

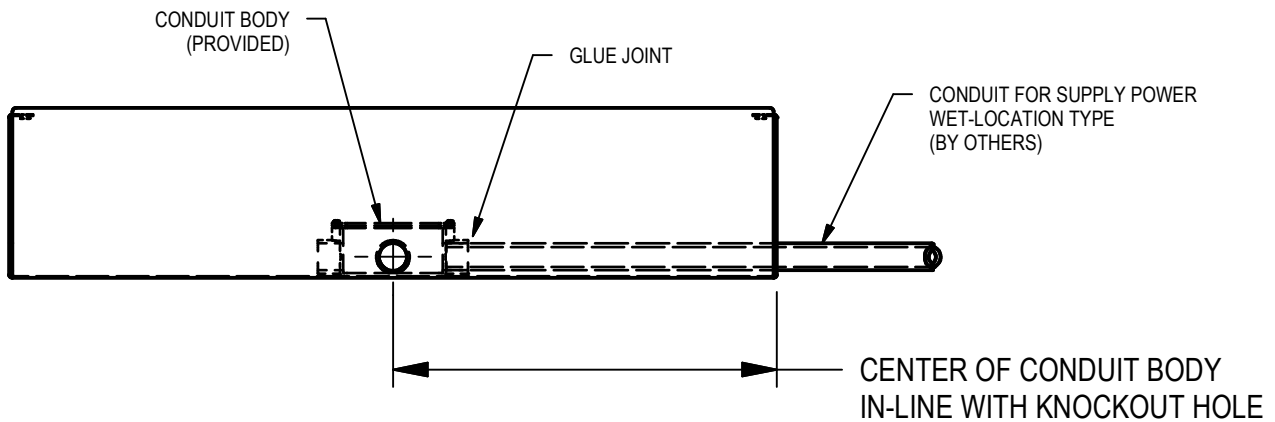
WARNING: Risk of fire and electrical shock. This product is to be installed by a qualified electrician only.

CAUTION: When using electrical equipment, basic safety precautions should always be followed including the following: Read all instructions carefully before installation and save

for future use. Make sure installation and all connections are in accordance with National Electrical Code and any local regulations. To avoid possible electrical shock, be sure that power supply is turned off before installing or servicing this fixture. Servicing should be performed by qualified service personnel.

These instructions do not claim to cover all details or variations. When additional information is desired, please contact your SPI representative.

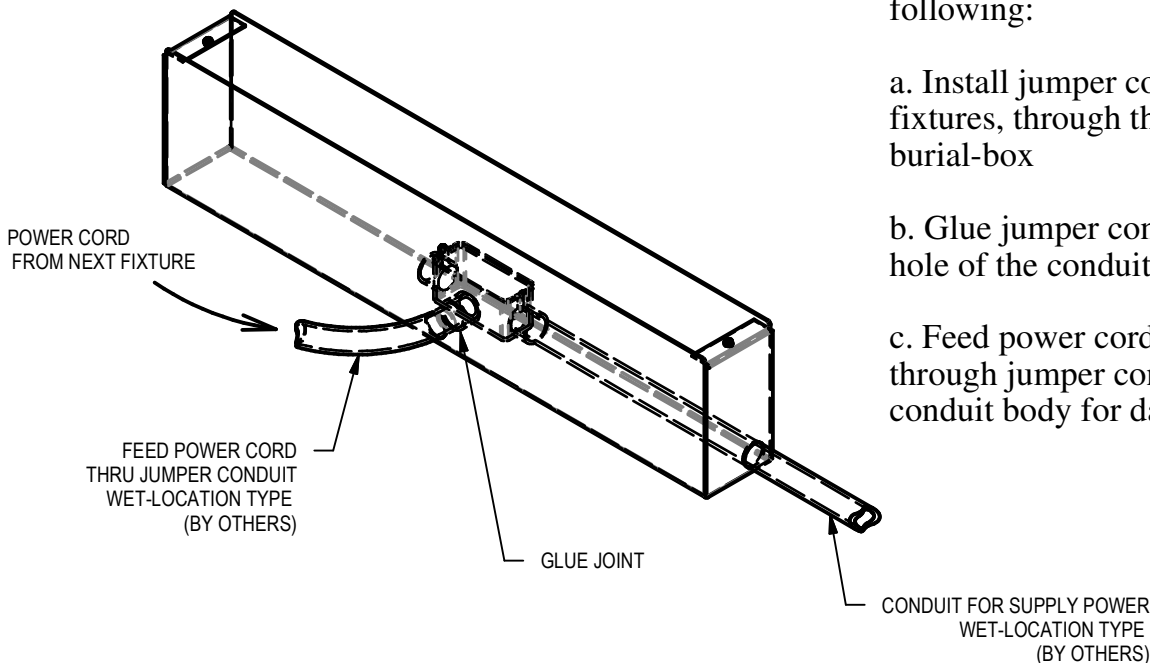
DBB/ RMB - BOX WITH INTEGRAL SEALED SPLICE ENCLOSURE



5. After the incoming supply power has been fed through wet-location conduit, Glue the conduit to an end-hole of the conduit-body (provided), inside of the burial-box. (Conduit & Glue by others).

6. For use with multiple fixtures in series, use wet-location conduit (provided by others) for the following:

- Install jumper conduit between fixtures, through the side hole of the burial-box
- Glue jumper conduit to the side hole of the conduit body.
- Feed power cord from next fixture, through jumper conduit, into the conduit body for daisy-chain wiring.



10/21/2016
IS87590X
Sheet #2 of 6

IMPORTANT SAFETY AND INSTALLATION INSTRUCTIONS

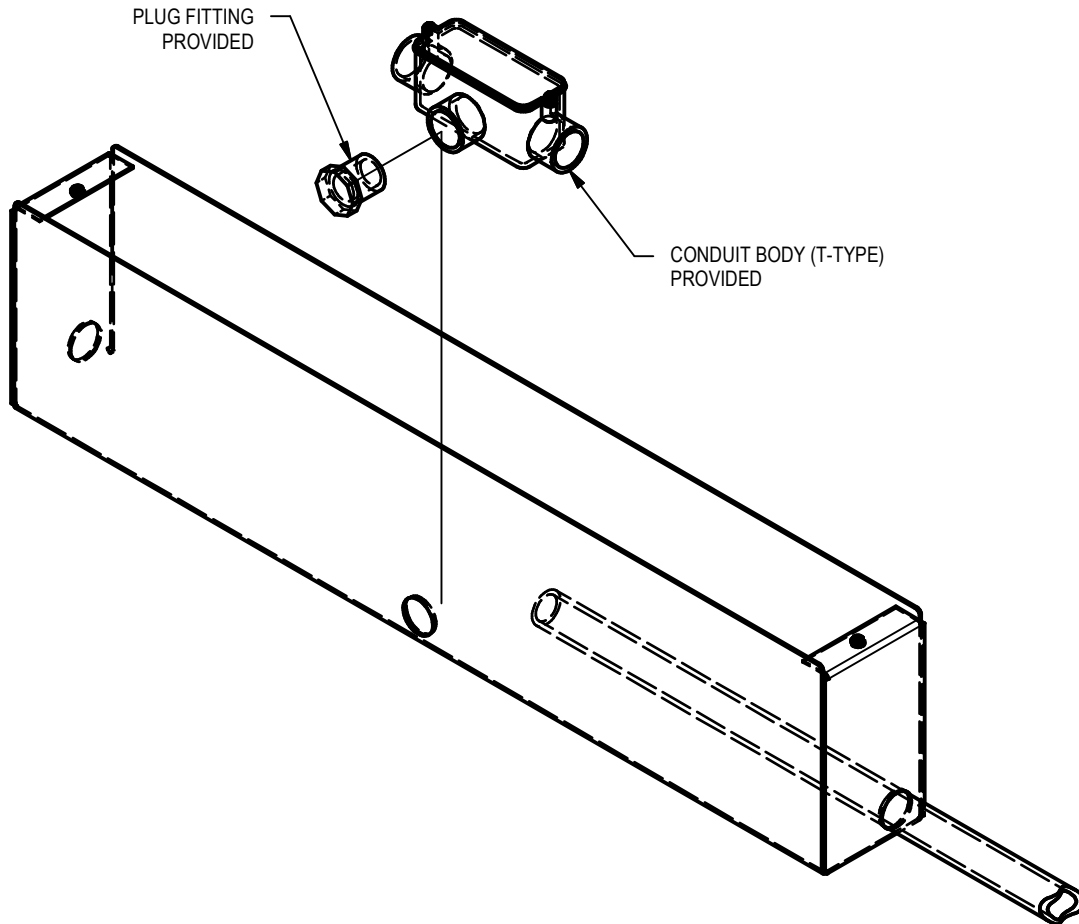
WARNING: Risk of fire and electrical shock. This product is to be installed by a qualified electrician only.

CAUTION: When using electrical equipment, basic safety precautions should always be followed including the following: Read all instructions carefully before installation and save

for future use. Make sure installation and all connections are in accordance with National Electrical Code and any local regulations. To avoid possible electrical shock, be sure that power supply is turned off before installing or servicing this fixture. Servicing should be performed by qualified service personnel.

These instructions do not claim to cover all details or variations. When additional information is desired, please contact your SPI representative.

DBB/RMB - BOX WITH INTEGRAL SEALED SPLICE ENCLOSURE



7. For single or terminal fixture wiring:

a. Glue the plug fitting (provided) to the side hole of the conduit body (provided), BEFORE installing the unit into the burial-box. (Glue by others)

**** WARRANTY IS VOID IF A WATERTIGHT SEAL IS NOT MAINTAINED THRU CONDUIT, CONDUIT HOUSINGS AND FITTINGS. CONTRACTOR IS RESPONSIBLE FOR CREATING A WATERTIGHT SEAL ON THE ABOVE LISTED COMPONENTS.**

10/21/2016
IS87590
Sheet #3 of 6

IMPORTANT SAFETY AND INSTALLATION INSTRUCTIONS

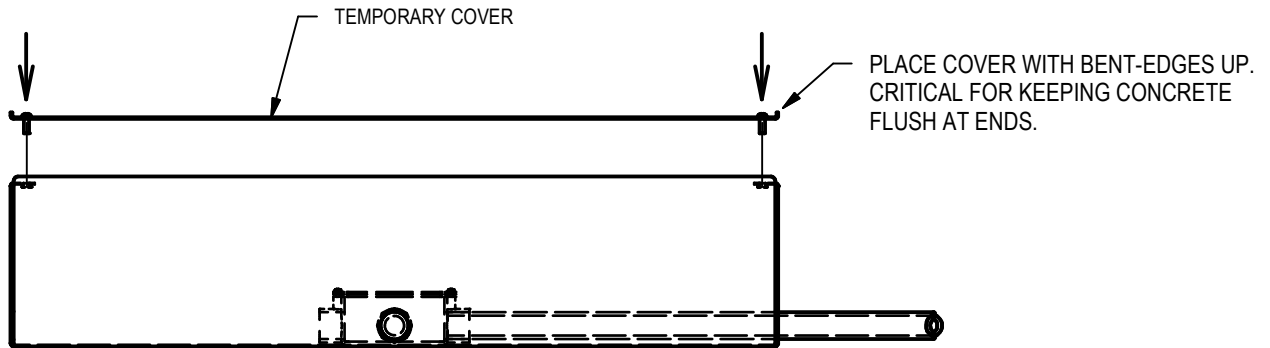
WARNING: Risk of fire and electrical shock. This product is to be installed by a qualified electrician only.

CAUTION: When using electrical equipment, basic safety precautions should always be followed including the following: Read all instructions carefully before installation and save

for future use. Make sure installation and all connections are in accordance with National Electrical Code and any local regulations. To avoid possible electrical shock, be sure that power supply is turned off before installing or servicing this fixture. Servicing should be performed by qualified service personnel.

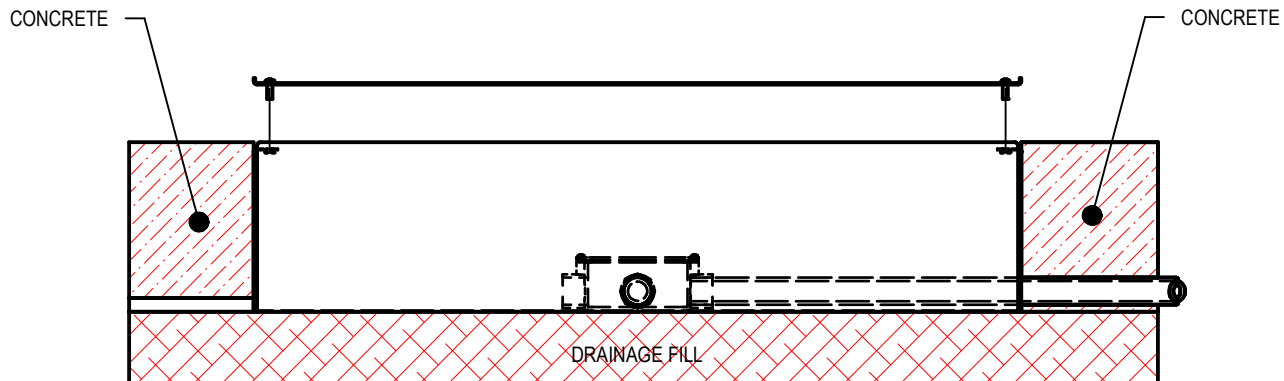
These instructions do not claim to cover all details or variations. When additional information is desired, please contact your SPI representative.

DBB/RMB - BOX WITH INTEGRAL SEALED SPLICE ENCLOSURE



8. Re-install the temporary cover.

* Ensure that the walls of the burial-box are tight against the cover, and the bent edges of the cover face up.



9. Pour concrete or fill mat'l to grade. *(Top of the burial-box is to be flush with the finished grade.)

10. Remove the temporary cover from burial-box, after concrete or fill has set.

IMPORTANT SAFETY AND INSTALLATION INSTRUCTIONS

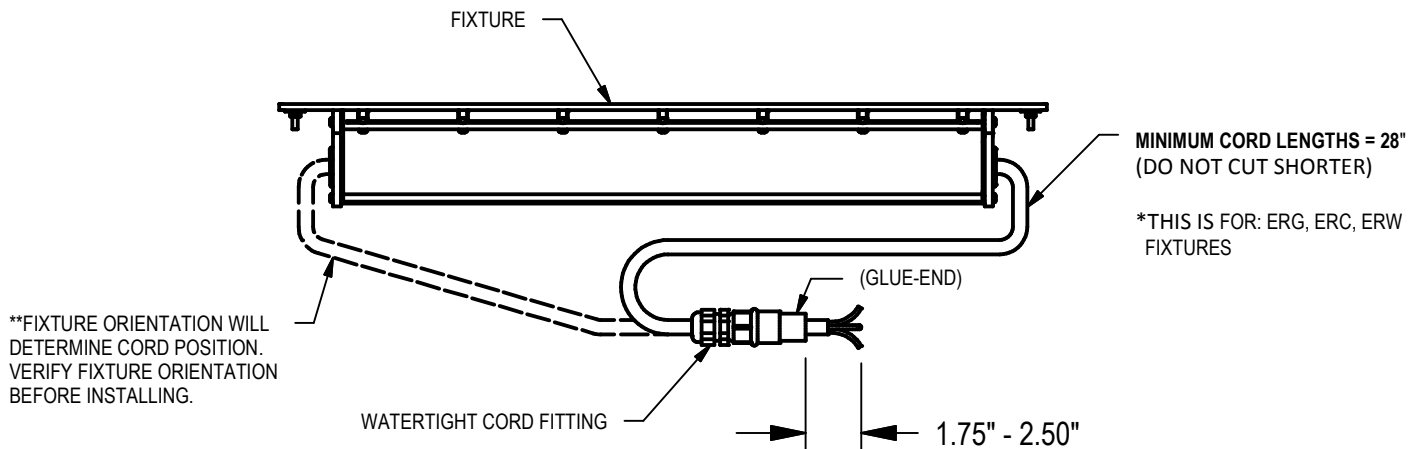
WARNING: Risk of fire and electrical shock. This product is to be installed by a qualified electrician only.

CAUTION: When using electrical equipment, basic safety precautions should always be followed including the following: Read all instructions carefully before installation and save

for future use. Make sure installation and all connections are in accordance with National Electrical Code and any local regulations. To avoid possible electrical shock, be sure that power supply is turned off before installing or servicing this fixture. Servicing should be performed by qualified service personnel.

These instructions do not claim to cover all details or variations. When additional information is desired, please contact your SPI representative.

DBB/RMB - BOX WITH INTEGRAL SEALED SPLICE ENCLOSURE



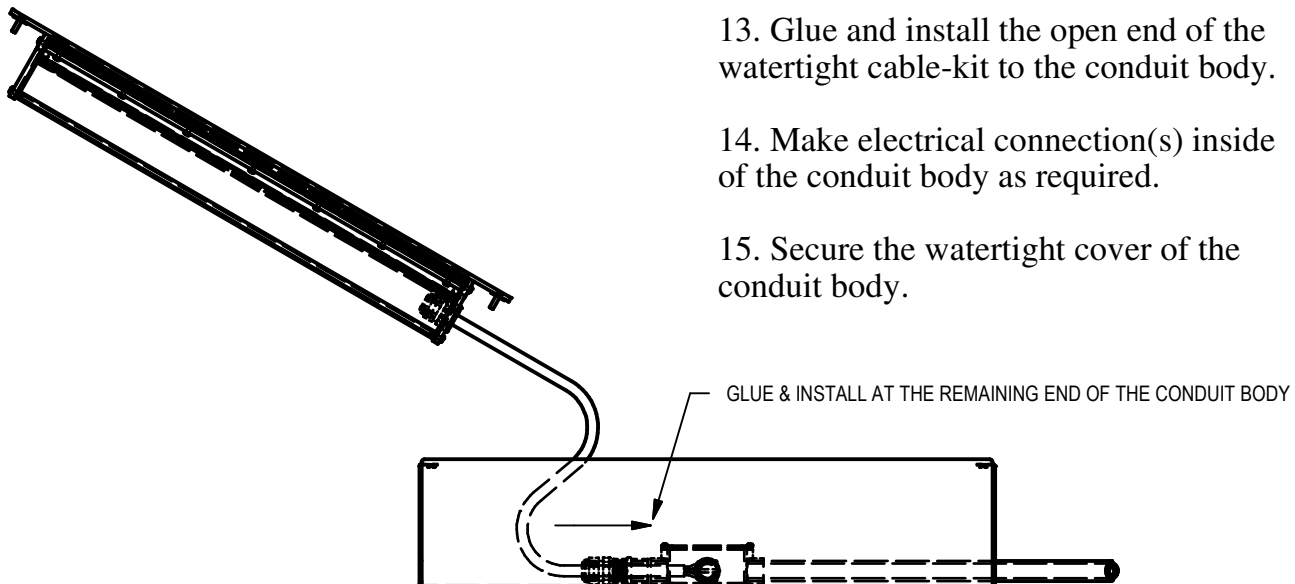
11. Attach and tighten watertight cord fitting (provided) onto the end of the fixture power cord as shown. (Leave enough excess cord to make splice inside conduit body. Approx 1.75" - 2.50")

12. Feed the fixture power cord through the open end of the conduit body.

13. Glue and install the open end of the watertight cable-kit to the conduit body.

14. Make electrical connection(s) inside of the conduit body as required.

15. Secure the watertight cover of the conduit body.



10/21/2016
IS87590X
Sheet #5 of 6

IMPORTANT SAFETY AND INSTALLATION INSTRUCTIONS

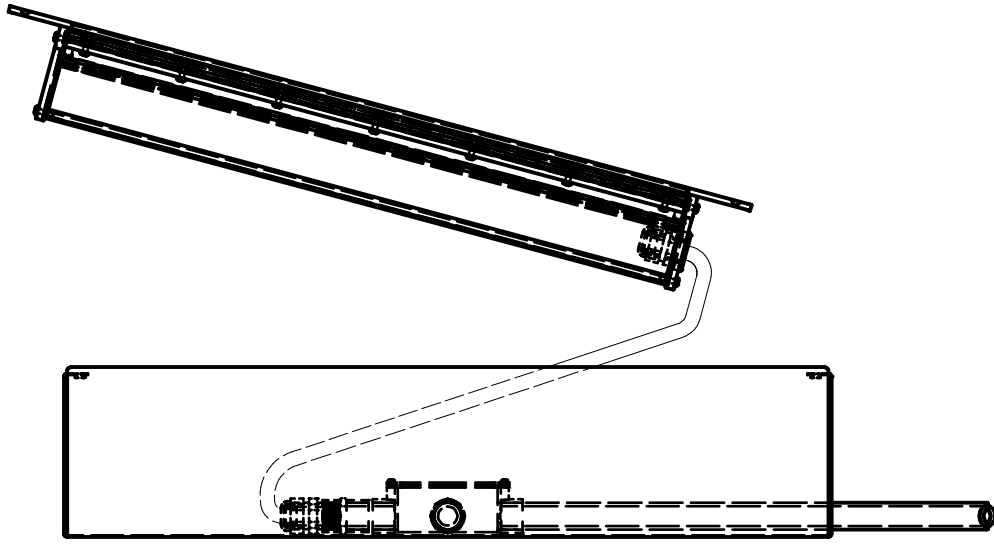
WARNING: Risk of fire and electrical shock. This product is to be installed by a qualified electrician only.

CAUTION: When using electrical equipment, basic safety precautions should always be followed including the following: Read all instructions carefully before installation and save

for future use. Make sure installation and all connections are in accordance with National Electrical Code and any local regulations. To avoid possible electrical shock, be sure that power supply is turned off before installing or servicing this fixture. Servicing should be performed by qualified service personnel.

These instructions do not claim to cover all details or variations. When additional information is desired, please contact your SPI representative.

DBB/RMB - BOX WITH INTEGRAL SEALED SPLICE ENCLOSURE



16. Install fixture into burial-box. Feed the cord-end in first, at at slight angle, to clear the mounting tab. (Cord orientation may differ from shown. Verify correct fixture position.)



17. Fasten the fixture to the mounting holes of the burial-box. Use the mounting screws provided.